

These directions will explain typical control installations only and will not cover any plow light applications. See website for full color installation manual

Warning you must unplug the power plug from the truck / equipment after each use or wire in a on off switch on the ground wire of the receiver. Failure to do this could result in accidental operation, battery drainage over a long period of time, serious injury or even death. Intended for off road use only.

Receiver / Solenoid Box Details All Plows See Fig 1

Truck side- Connect a 4 gauge power ground plug directly to the positive and ground of the battery and route it through the grill.

Plow Side connections. Connect a 4 gauge power ground plug (red) to one of the larger posts on the solenoid (this will become the always hot post). (Black) to the ground post on gray enclosure box

Connect a (black) 4 gauge wire with eyelets from ground post of plow motor to ground post on gray pvc enclosure box.

Connect a (red) 4 gauge wire with eyelets from positive post of plow motor to other large post of solenoid.

Connect a (black) 14 gauge 3" wire with eyelets from one of the small posts of the solenoid to the ground post on the gray pvc enclosure box.

Connect gray wire from wireless to other small post on solenoid.

Connect the black wire from the wireless to the ground post on the gray pvc enclosure.

Connect the red wire from the wireless to the hot side of the solenoid.

Lighting- There are numerous variations of how to control the equipment lighting based on equipment and vehicle type which is not covered in our manuals.

Transmitter Button Assignment details All Plows. See Fig 2

Button 1 label as (1) optional latching circuit to be used with automotive relay for lights... Yellow Wire

Button 2 label as (2) optional latching circuit to be used with automotive relay for lights... White Wire

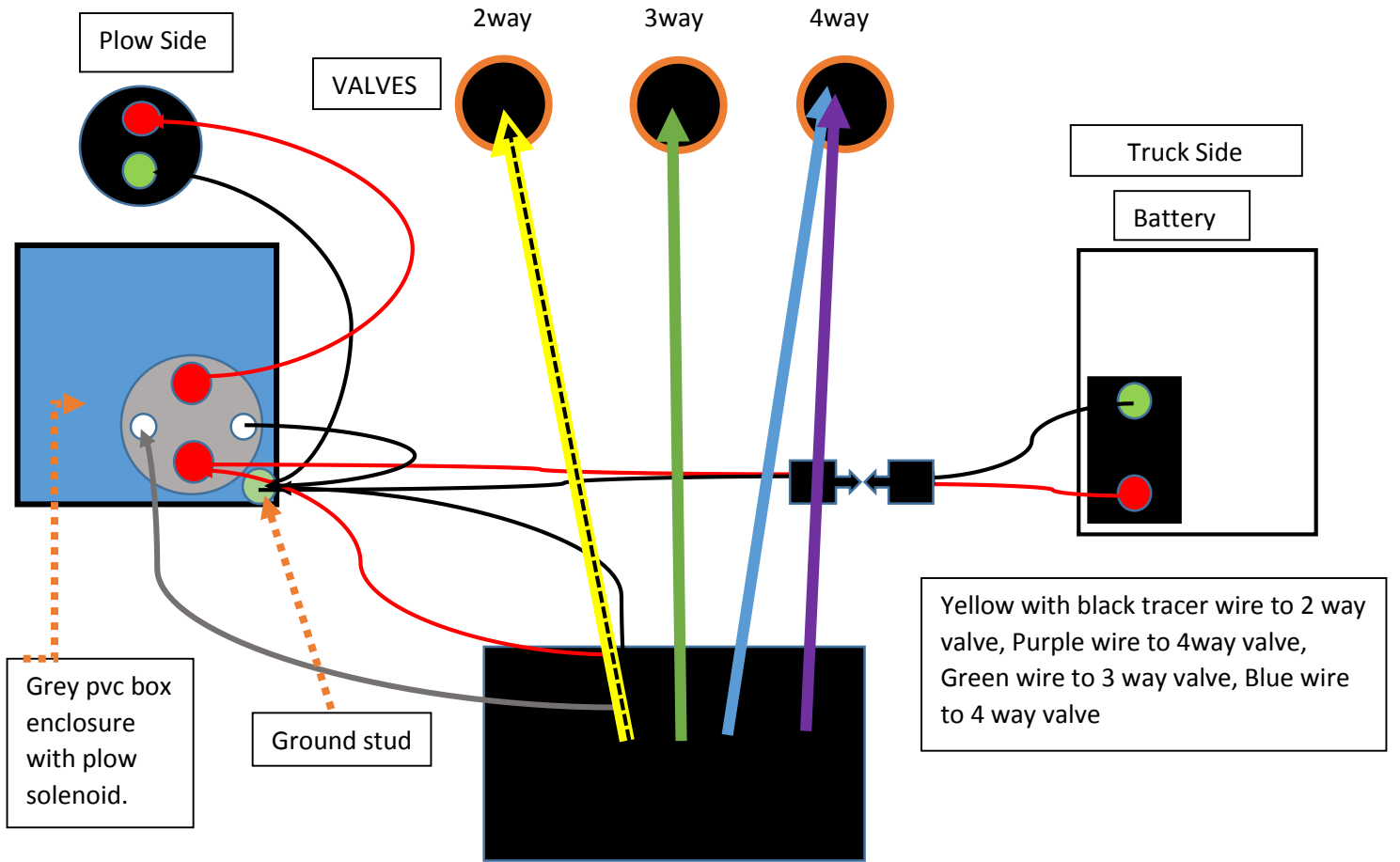
Button 3 label as ← for angle left momentary with double pull on gray wire also operates button 7 (purple wire) for angle left... Green Wire

Button 4 label as → for angle right, momentary with double pull on gray wire for angle right...Blue Wire

Button 5 blank, Button 6 blank

Button 7 labeled ↑ for up momentary with double pull to gray wire for raise up...purple wire Button 8 labeled ↓ for down latching for float mode, up button will take it off float or press button (D) a second time to unlatch.... Yellow with black striped wire

Western and Fisher Straight blade controller wiring diagram. FIG 1



Wireless Receiver- shown outside of grey pvc box for illustration.

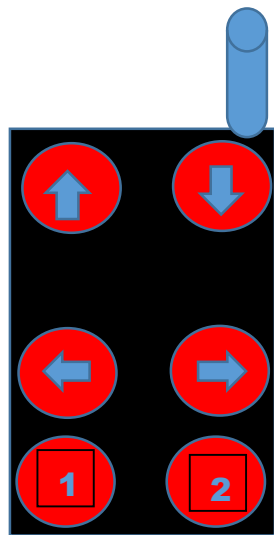


FIG 2

Transmitter

VALVE WIRING

For Western and Fisher straight blade plows locate the 2w, 3w and 4w valves. SEE FIG 1

Connect the yellow with black tracer wire to the 2w valve coil.

Connect the green wire to the 3w valve coil and the purple and blue wires to the 4w valve coil.

On newer Western Ultramount 2 straight blade plow systems it is possible to remove or disconnect the controller portion of the module boxes that the oem controller uses and wiring in the new wireless.

For Boss Straight Blade Plows FIG 3

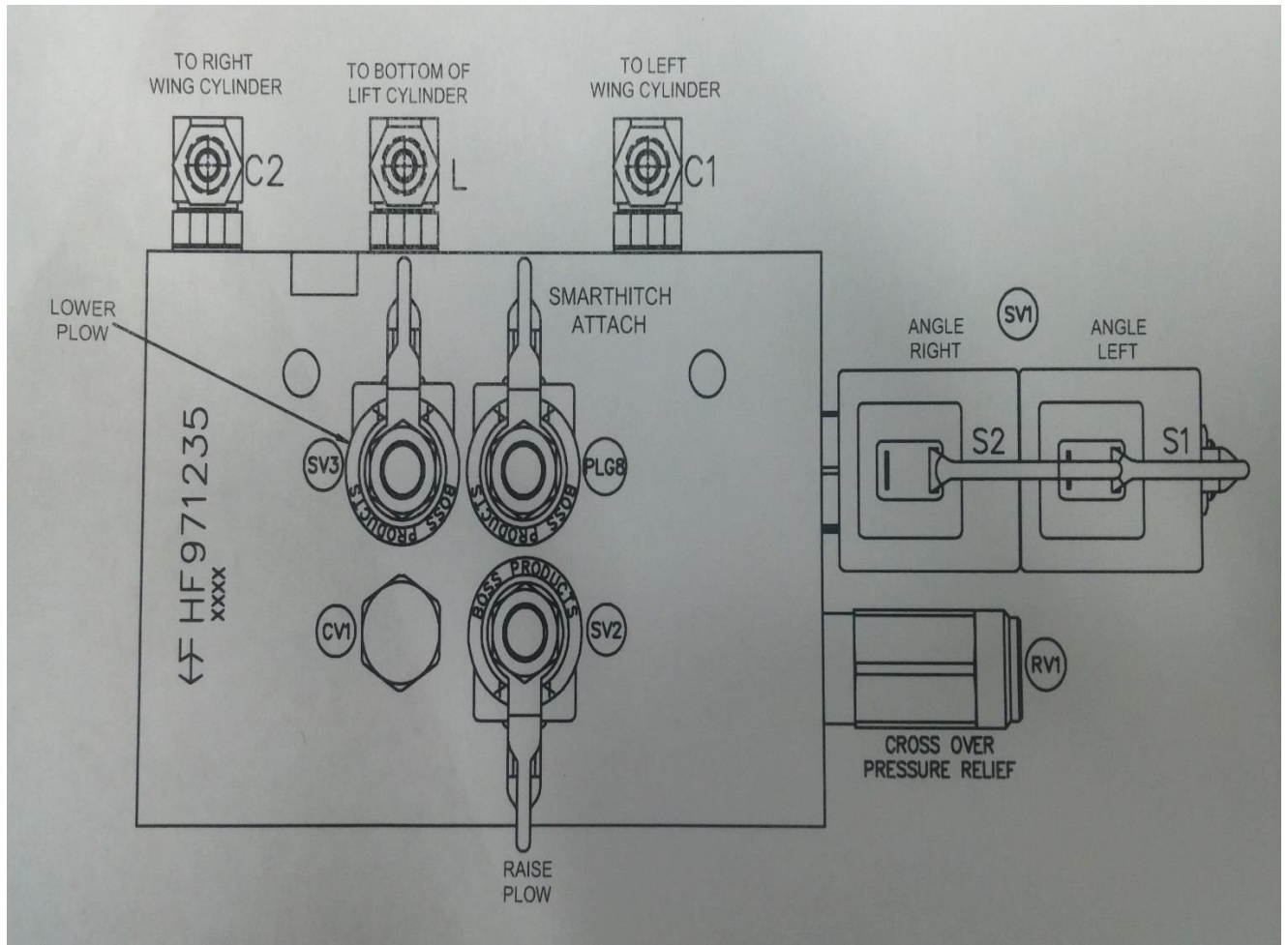
Connect Yellow with black tracer wire to SV3 lower valve coil

Connect Purple wire to SV2 raise valve coil

Connect Green wire to the S1 angle left coil

Connect the Blue wire to the S2 angle right coil

FIG 3



For Hiniker Straight Blade Plows FIG 4

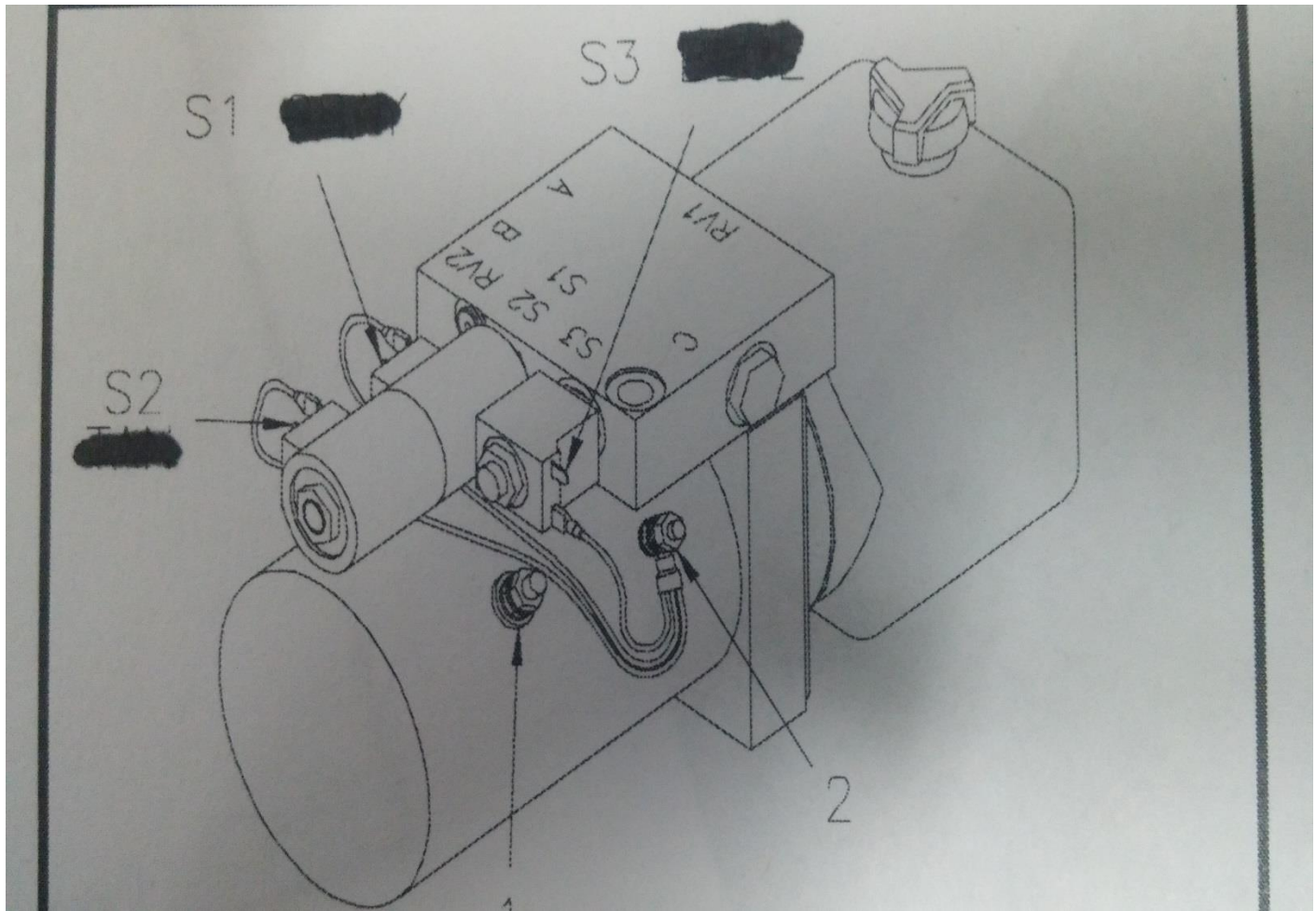
Do not use purple wire tape and tuck

Connect Yellow with black tracer wire to S3 lower valve coil

Connect Green wire to the S1 angle left coil

Connect the Blue wire to the S2 angle right coil

FIG 4



For Meyer E-46 and E-46H ONLY Straight Blade Plows FIG 5

Do not use purple wire tape and tuck

Connect Yellow with black tracer wire to A valve coil

Connect Green wire to the B angle left coil

Connect the Blue wire to the C angle right coil

For Meyer / Diamond E-47, E-47H, E57, E-60, E-60H ONLY Straight Blade Plows FIG 5

Do not use Blue Wire Tuck and Tape

Connect Purple wire to B valve coil

Connect Yellow with black tracer wire to A valve coil

Connect the Blue wire to the C angle right coil



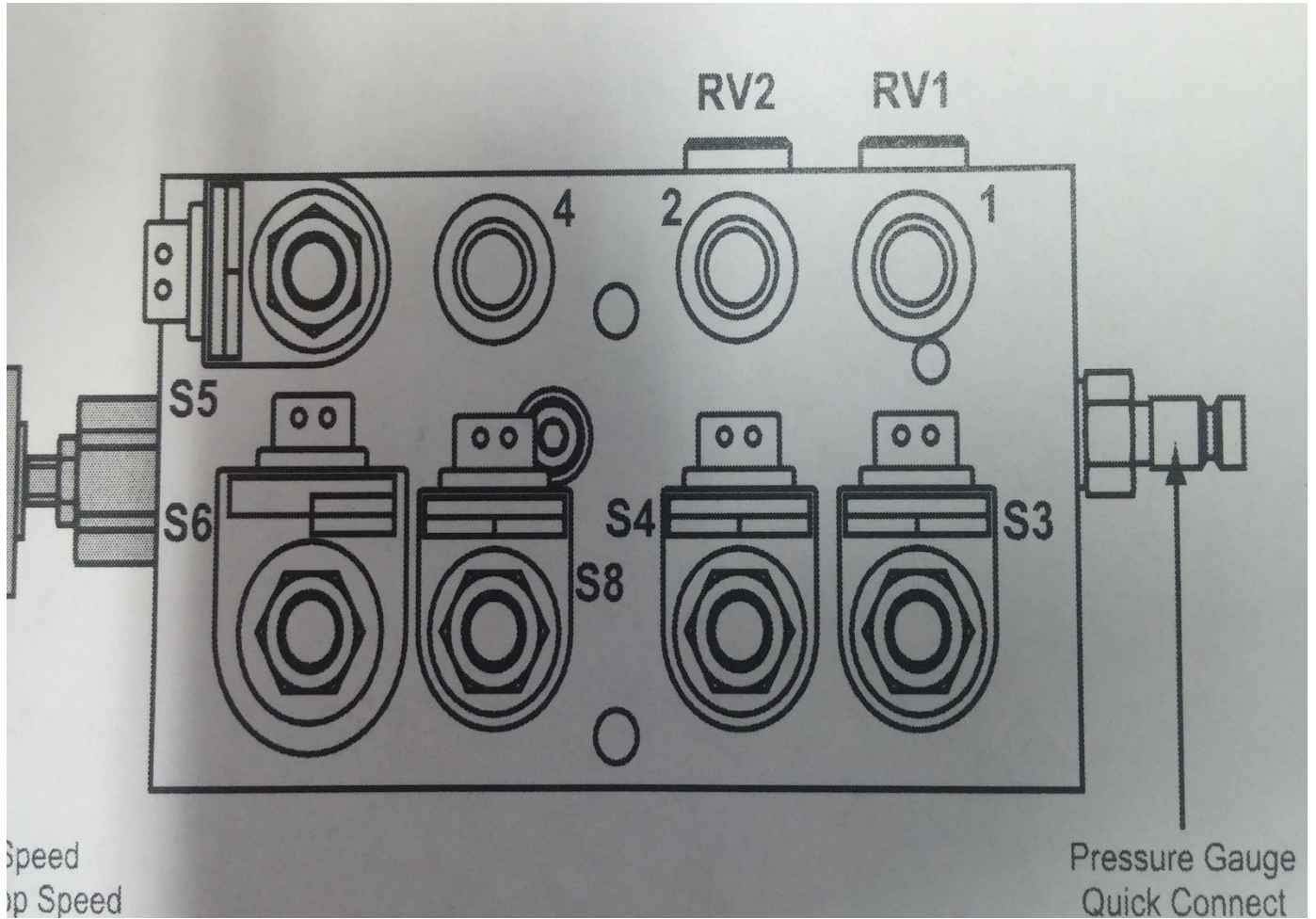
Blizzard Straight Blade Plows 680LT / 720LT

Connect Purple wire to S6 coil Raise

Connect Yellow with black tracer wire to S5 and S8 coil Lower

Connect Green Wire to S3 coil Angle Left

Connect Blue wire to S4 coil Angle Right



Blizzard Straight Blade Snow Plow 7600HD 8000HD 8600HD 9000HD

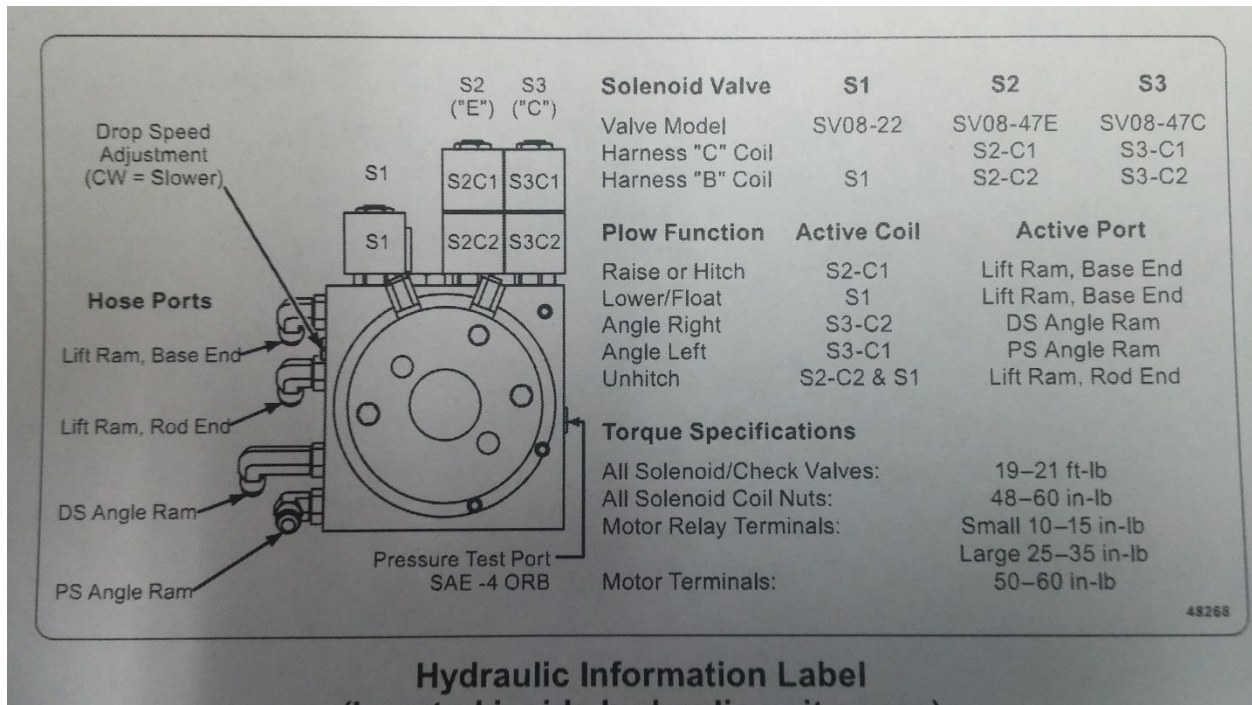
Connect Purple wire to S2C1 coil Raise

Connect Yellow with black tracer wire to S1 and S2C2 coil Lower

Connect Green Wire to S3C1 coil Angle Left

Connect Blue wire to S3C2 coil Angle Right

Leave power switch and Arm Blade operation switch intact.



Snowy Straight blade plows Gravity down (non down pressure plows)

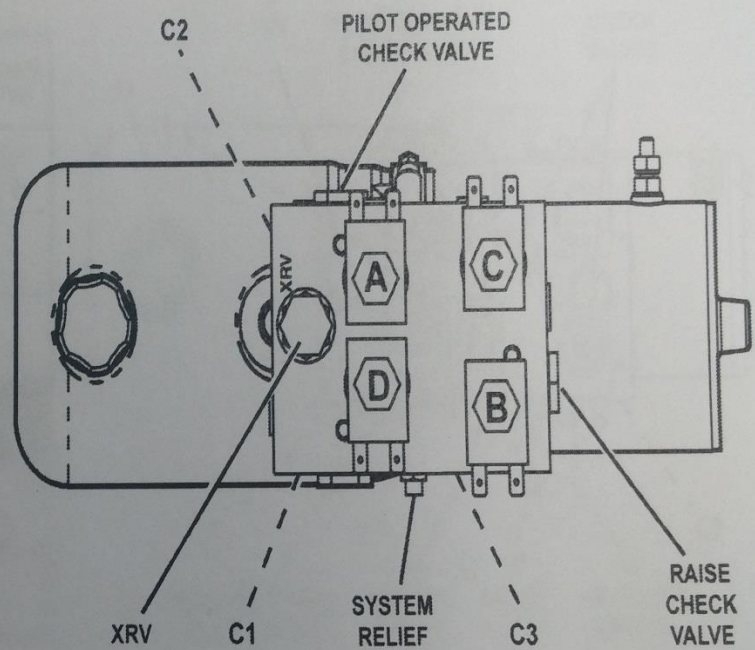
Connect Yellow with black tracer wire to B lower valve coil

Connect Purple wire to C raise valve coil

Connect Green wire to the D angle left coil

Connect the Blue wire to the A angle right coil

PLOW FUNCTION	MOTOR SOLENOID	A	B	C	D
WIRE COLOR	BROWN	RED	BLUE/WHITE	TAN	GREEN
RAISE	X			X	
DOWN (FLOAT)			X		
ANGLE LEFT	X				X
ANGLE RIGHT	X	X			



STRAIGHT BLADE SNOW PLOW CONTROL INCLUDES.

Wireless receiver with wire leads, weather proof enclosure and cover with screws.
Wireless transmitter with 3m glow in the dark label and raised button labeling.
Rubber boot and lanyard for transmitter

STRAIGHT BLADE SNOW PLOW KIT INCLUDES

- (1) pvc enclosure box to mount on plow side
- (1) sealed cover for pvc enclosure box
- (1) snow plow solenoid
- (1) wireless programmable receiver in sealed weather proof enclosure
- (1) wireless transmitter with 3m raised button glow in the dark label and rubber protection boot and lanyard
- (1) plow side power ground cable plug end
- (1) truck side power ground cable plug end
- (2) truck and plow side plug dust covers
- (1) 24" #4 gauge black ground cable with eyelets (plow motor to enclosure)
- (1) 24" #4 gauge red power cable with eyelets (plow motor to solenoid)
- (1) short 14 gauge ground wire solenoid.
- (4) 3m velcro strips to secure wireless inside enclosure
- (1) Ground stud for enclosure box.

Misc hardware, cover screws, wiring connections
Complete instructions

Other Considerations and Disclaimer

Some straight blade plows are not covered in this manual as we cover most of the major brands. Use these directions as a guide for other brands.

DISCLAIMER- Not responsible for errors in this manual. There may be some variations of the common wiring connections from brand to brand. Intended for off road use only. As with any equipment safety guidelines should be followed at all times. Keep children, pets and all persons away from the equipment when operating. Disconnect the power when not using to prevent accidental operation. Protect all circuits with fuses to prevent shorts.

The trade names Boss, Western, Meyer, Blizzard, Diamond, Hiniker, Snoway and any others are mentioned for illustration purposes only. This product is not in any way authorized for use by these manufacturers as is any non oem part or accessory.

The end user assumes all liability in the proper installation and application of this product.